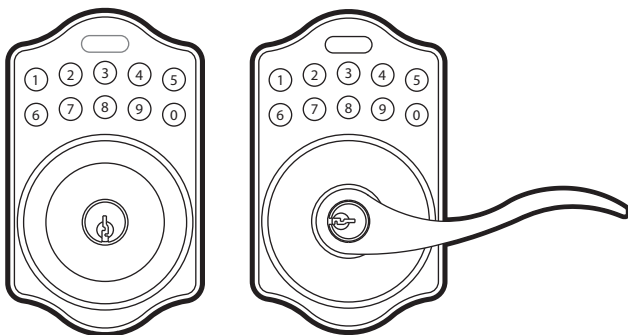


LOCKSTATE®

Remote**LOCK™**



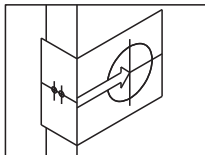
ELECTRONIC DEADBOLT & LEVER LOCK LS-5i USER MANUAL



ATTENTION: Please do not use an “electronic screwdriver” for installation

INSTALLATIONS INSTRUCTIONS

1. CONFIGURE LATCH BACKSET

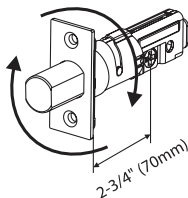


The BACKSET is the distance between the center of cross bore and edge bore of the door.

Adjustable latch fits both BACKSET of 2-3/8" (60mm) and 2-3/4" (70mm). Please follow the steps shown below for BACKSET adjustment.

DEADBOLT BACKSET

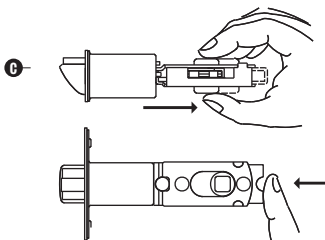
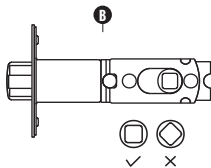
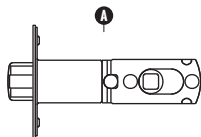
Rotate the latch case as diagram on the right for backset 2-3/4" (70mm) or reverse direction for 2-3/8" (60mm).



LEVER BACKSET

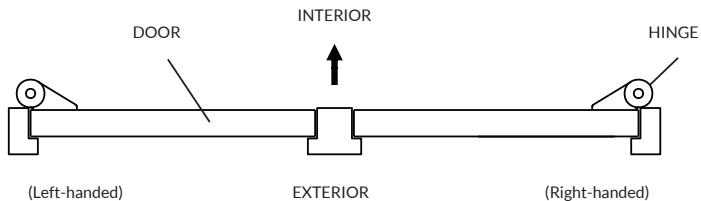
- A** The backset shown on the left is 60mm (2-3/8").
- B** Pull the cam toward right to extend the backset to 70mm (2-3/4").
- C** The backset shown in figure C is 70mm (2-3/4"). Pull the cam back to left will return the backset to 60mm (2-3/8").

Note : The shape of cam should be square.

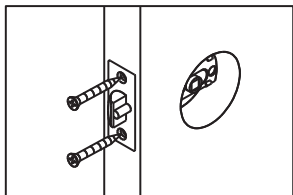


2. IDENTIFY DOOR HANDING

Face the door from outside, the door is left-handed if the hinge is on the left-hand side of the door, whereas the door is right-handed if the hinge is on the right-hand side of the door.

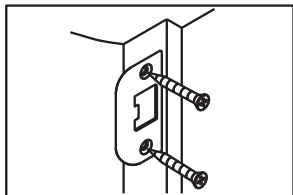


3. INSTALL LATCH



Insert the latch and tighten it with screws.
Please use "tapping screws" for metal doors.

4. INSTALL STRIKE

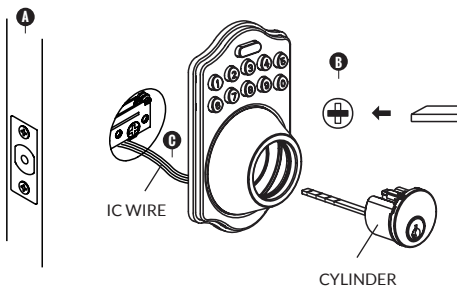


Insert the strike and tighten it with screws.
Please use "tapping screws" for metal frames.

5. INSTALL KEYPAD ASSEMBLY

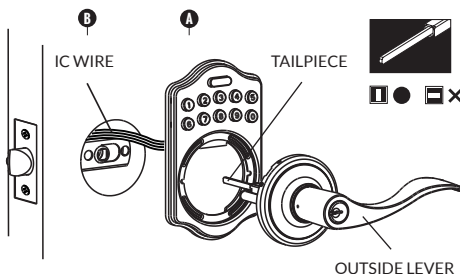
DEADBOLT KEYPAD ASSEMBLY

- A** Ensure the latch bolt is retracted.
- B** Please refer to diagram B for cylinder installation. Place deadbolt against keypad with tailpiece in horizontal position inserted through hub of the latch.
- C** Pass the IC wire under the latch to the interior side of the door.



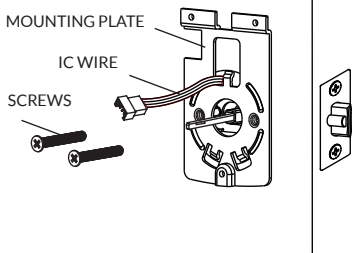
LEVER KEYPAD ASSEMBLY

- A** Place the leverset against keypad with tailpiece in vertical position inserted through cam of the latch.
- B** Pass the IC wire over the latch to the interior side of door.



6. INSTALL INSIDE MOUNTING PLATE

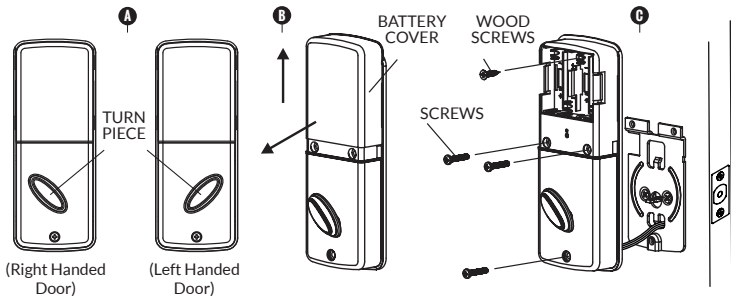
Pass the IC wire through the wire hole on the mounting plate and affix the mounting plate with screws. If outside lock assembly is lopsided, please loosen the screws to adjust it's position and tighten the screws again.



7. INSTALL RECEIVER MODULE

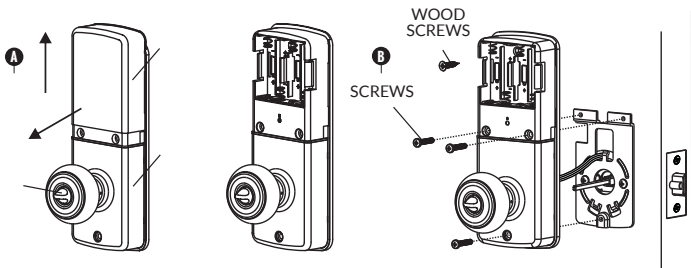
DEADBOLT RECEIVER INSTALL

- A** Adjust turn piece as shown in diagram A.
- B** Remove the battery cover (push it up and pull it out).
- C** Connect the IC wire then attach receiver module to the door with screws. It's optional to use the included wood screw (wood screw only for wood doors).



LEVER RECEIVER INSTALL

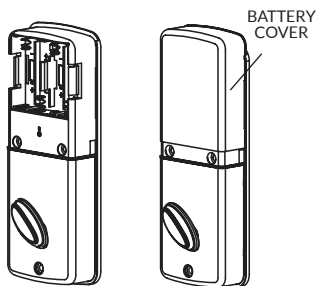
- A** Remove the battery cover (push it up and pull it out).
- B** Connect the IC wire then attach receiver module to the door with screws. It's optional to use the included wood screw (wood screw only for wood doors).



8. INSTALL BATTERIES

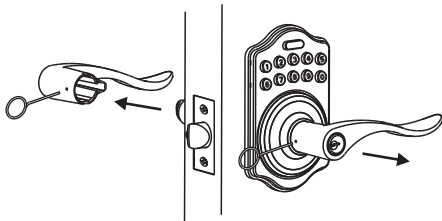
Insert 4 AA Alkaline or Lithium batteries and put the battery cover back on the receiver module.

Do not use rechargeable (NiCD, NiHM, LiPo, etc.) batteries or batteries with a voltage rating of under/over 1.5v * Please Note: Deadbolt model will not function until door handing is programmed on the lock (pg.8)

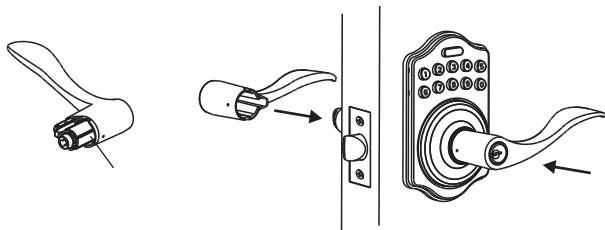


9. CHANGE LEVER HANDING

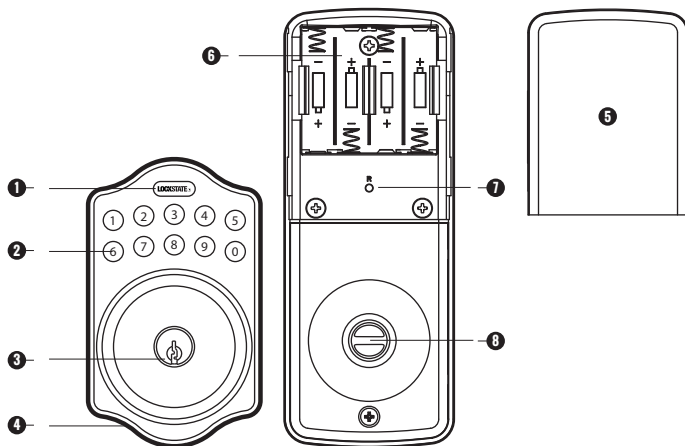
- A** Be sure the levers are unlocked. Insert the provided pin wrench into the small hole on the neck of lever and apply pressure to depress the catch and pull out the lever from the stem. Follow the same steps to remove interior lever and exchange the position of inside and outside levers.



- B** Remove the cylinder from lever and insert it into opposite lever. Then install the levers and make sure the small hole on the neck of lever aligns over the catch perfectly. Rotate the levers to see if it operates well.



LOCK OVERVIEW



- 1** LOCKSTATE BUTTON
The LockState Button is utilized for entering codes and setting functions. It's also a lock button.
- 2** NUMBER BUTTONS
Input buttons for codes and function programming.
- 3** CYLINDER
Lock/Unlock the lockset from exterior.
- 4** GASKET
Prevent water permeating into lockset.
- 5** BATTERY LID
Slide the lid to change the batteries.
- 6** BATTERY HOLDER
Four AA (1.5v) Alkaline or Lithium batteries only.
- 7** R BUTTON (RESET)
Restores default settings.
- 8** TURN-BUTTON
Lock/Unlock the lockset from interior.

SPECIFICATIONS/FUNCTIONS

Power: 6v, four AA (1.5V) Alkaline or Lithium batteries only. Low battery warnings at 4.25V and 3.75V

Programming Code (PC): The preset programming code is 123456. Please change it to a new code for security. Programming code length is 4-10 digits.

Local Codes: Codes that are programmed using the programming code at the lock. There is a limit of 10 in memory and the code 1234 is programmed by default. Local code lengths are 4-10 digits.

User Codes: Codes that are programmed using the web portal and can be configured to follow an access schedule. User code lengths are 4-10 digits.

Auto-Lock / Storehouse Mode: The lock will automatically relock itself after the specified delay following an unlock. Default delay is 5 seconds. Enabled by default on all lever models.

Passage Mode: The lock will remain unlocked after a code is entered. Enabled by default on all deadbolt models.

Audio Indications

- 1 beep indicates successful operation or button press
- 2 beeps indicates successful programming
- 3 beeps indicates operational or programming error
- 4 beeps indicates 4.25V low battery warning
- 8 beeps indicates 3.75V low battery warning

Illuminated Indications

- 1 green flash indicates successful operation or button press
- 2 green flashes indicates successful programming
- 3 red flashes indicates operational or programming error
- 4 red flashes indicates 4.25V low battery warning
- 8 red flashes indicates 3.75V low battery warning
- Orange flashes indicates lock is in the middle of a programming sequence

Restore Factory Defaults

Preset factory settings can be restored by pressing and holding the "R" button on the battery pack within 10 seconds of power cycling the lock (removing and reinserting a single battery).

Deadbolt Door Handing

Directional instructions for the deadbolt to correctly set locked/unlocked positions. Required programming during initial setup or after a factory reset for deadbolt models only.

Unlocking the door

The lockset will become unlocked by key, by entering a user/local code followed by LockState on the keypad, or by interior turn knob.

Locking the door

The lockset will become locked by key, by pressing the LockState button twice, or by interior turn knob.

FUNCTION PROGRAMMING

PC: Programming Code
(Default: 123456)

LC: Local Code

RB: Remote Button

Set Door Handing (Deadbolt only)

NOTE: Place deadbolt in the “unlocked” position for this step. The lock will not operate until this setting has been programmed during initial setup or after factory reset.

Enter PC ➔ **LOCKSTATE** ➔ 140 ➔ **LOCKSTATE**

Change Programming Code

Enter PC ➔ **LOCKSTATE** ➔ 100 ➔ **LOCKSTATE** ➔ Enter New PC ➔ **LOCKSTATE**

Add New Local Code (Max 10)

Enter PC ➔ **LOCKSTATE** ➔ 110 ➔ **LOCKSTATE** ➔ Enter New LC ➔ **LOCKSTATE**

Delete Local Code

Enter PC ➔ **LOCKSTATE** ➔ 120 ➔ **LOCKSTATE** ➔ Enter LC ➔ **LOCKSTATE**

Delete All Local Codes

NOTE: This will place the default local code 1234 back into memory.

Enter PC ➔ **LOCKSTATE** ➔ 131 ➔ **LOCKSTATE**

Add Remote (Max 5)

Enter PC ➔ **LOCKSTATE** ➔ 117 ➔ **LOCKSTATE** ➔ Press RB ➔ **LOCKSTATE**

Delete All Remotes

Enter PC ➔ **LOCKSTATE** ➔ 118 ➔ **LOCKSTATE**

Reset Wi-Fi Settings

Enter PC ➔ **LOCKSTATE** ➔ 312 ➔ **LOCKSTATE**

Enable Auto-Lock (Storehouse Mode)

Enter PC ➔ **LOCKSTATE** ➔ 271 ➔ **LOCKSTATE**

Set Auto-Lock Delay (5-20 seconds)

Enter PC ➔ **LOCKSTATE** ➔ 260 ➔ **LOCKSTATE** ➔ Enter Delay ➔ **LOCKSTATE**

Disable Auto-Lock (Passage Mode)

Enter PC ➔ **LOCKSTATE** ➔ 270 ➔ **LOCKSTATE**

Enable Mute

Enter PC ➔ **LOCKSTATE** ➔ 160 ➔ **LOCKSTATE**

Disable Mute

Enter PC ➔ **LOCKSTATE** ➔ 161 ➔ **LOCKSTATE**

ELECTRONIC DEADBOLT & LEVER LOCK

QUICK START GUIDE



- 1- INSTALL LOCK
Refer to pages 1-4 for installation



- 2- SET DOOR HANDING (DEADBOLT LOCK ONLY)
NOTE: Place deadbolt in the “unlocked” position for this step. Lock may not operate until this setting has been programmed during initial setup or after factory reset. Default Programming Code is 123456.



- 3- WI-FI PROVISIONING
Refer to the separate Provisioning Guide for instructions on setting up the lock to connect to your Wi-Fi network for internet access.



- 4- OPERATING THE LOCK

Unlocking the door

The lockset will become unlocked by entering a user/local code on the keypad followed by LockState, by key, or by interior turn knob.

Locking the door

The lockset will become locked by pressing the Lock-State button twice, by key, or by interior turn knob.